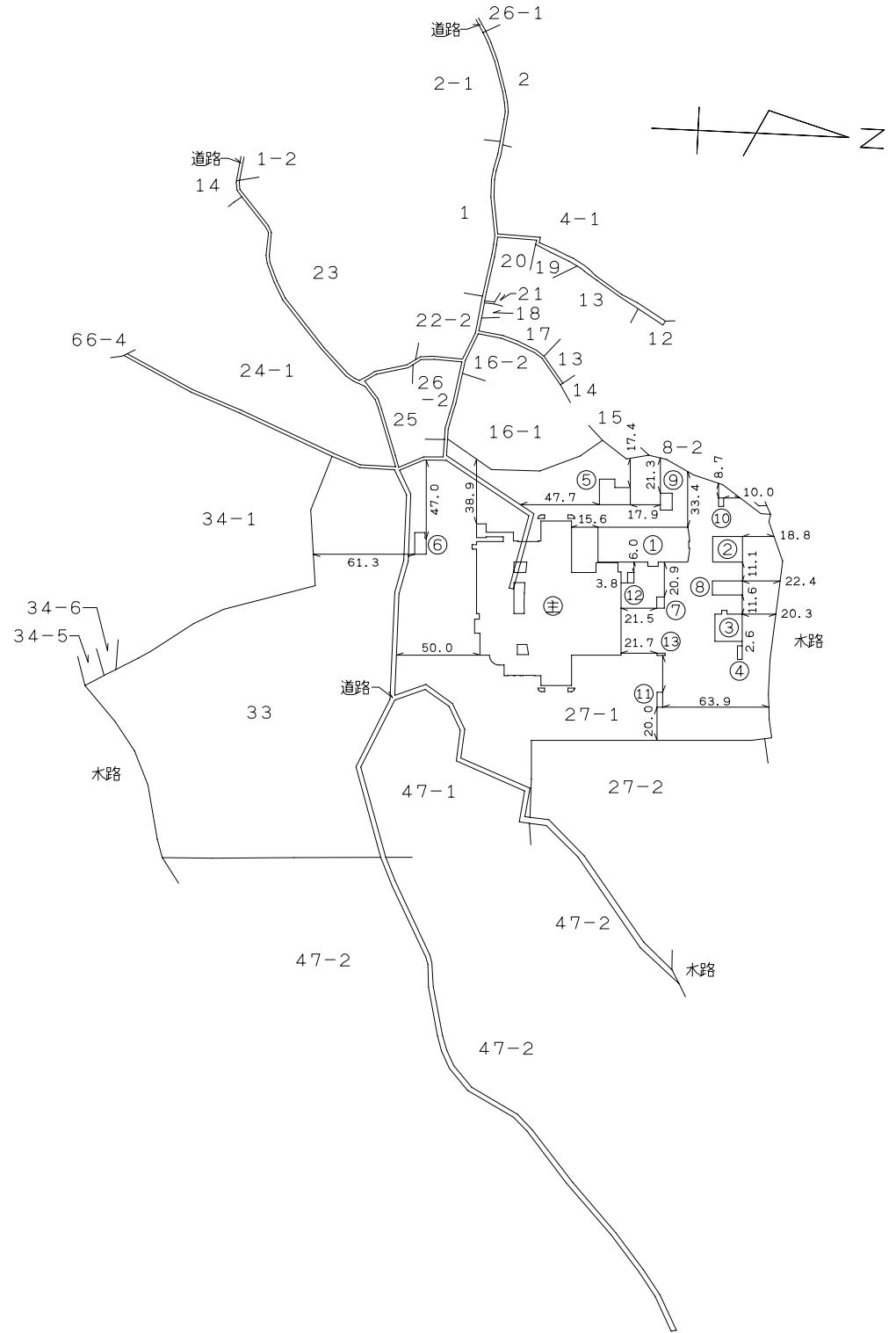


27番1

名取市愛島塩手字野田山 27番地1・33番地・27番地1先





27番1

名取市愛島塩手字野田山 27番地1・33番地・27番地1先

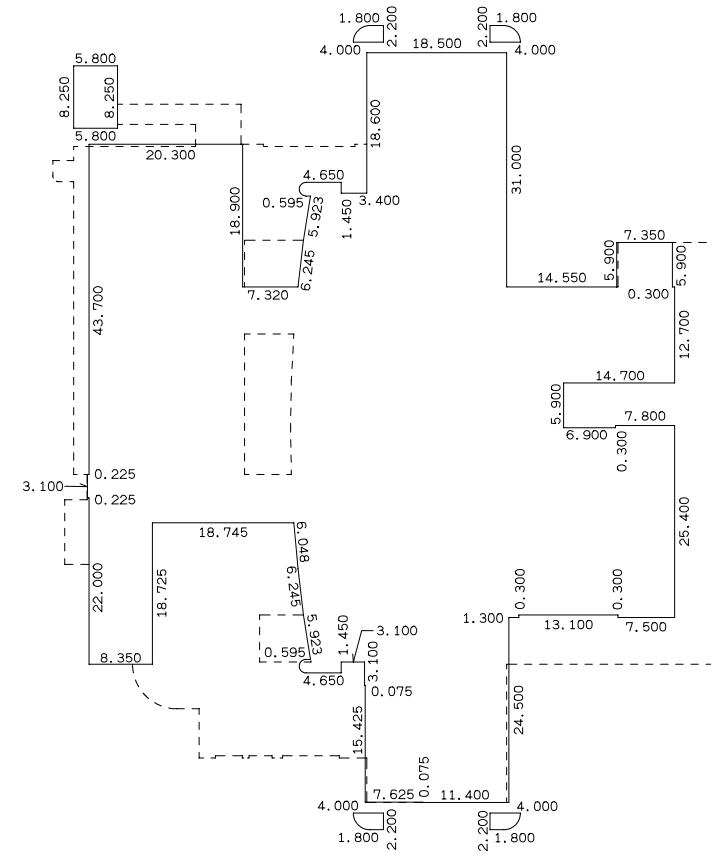
主たる建物2階

求積表

$(4.000 + 1.800) \times 2.200 \times 1/2$	=	6.38000
$(4.000 + 1.800) \times 2.200 \times 1/2$	=	6.38000
$\pi \times 2.200^2 \times 90^\circ 00' / 360^\circ$		
$- 2.200^2 \times \sin 90^\circ 00' \times 1/2$	=	1.38133
$\pi \times 2.200^2 \times 90^\circ 00' / 360^\circ$		
$- 2.200^2 \times \sin 90^\circ 00' \times 1/2$	=	1.38133
$18.500 \times 18.600$	=	344.1000
$5.800 \times 8.250$	=	47.8500
$20.300 \times 18.900$	=	383.6700
$4.650 \times 1.800$	=	8.3700
$21.900 \times 12.400$	=	271.5600
$\pi \times 0.900^2 \times 180^\circ 00' / 360^\circ$		
$- 0.900^2 \times \sin 180^\circ 00' \times 1/2$	=	1.27235
$(4.980 + 4.055) \times 5.850 \times 1/2$	=	26.42738
$(5.730 + 4.980) \times 6.200 \times 1/2$	=	33.20100
$7.350 \times 5.900$	=	43.3650
$27.095 \times 31.175$	=	844.6866
$49.830 \times 12.700$	=	632.8410
$(37.200 + 31.175) \times 0.525 \times 1/2$	=	17.94844
$35.130 \times 5.900$	=	207.2670
$7.800 \times 0.300$	=	2.3400
$49.830 \times 18.600$	=	926.8380
$0.225 \times 3.100$	=	0.6975
$8.350 \times 18.725$	=	156.3538
$(49.080 + 49.830) \times 6.200 \times 1/2$	=	306.62100
$1.300 \times 0.300$	=	0.3900
$22.200 \times 6.200$	=	137.6400
$(4.055 + 4.980) \times 5.850 \times 1/2$	=	26.42738
$7.500 \times 0.300$	=	2.2500
$4.650 \times 1.800$	=	8.3700
$19.100 \times 3.100$	=	59.2100
$\pi \times 0.900^2 \times 180^\circ 00' / 360^\circ$		
$- 0.900^2 \times \sin 180^\circ 00' \times 1/2$	=	1.27235
$19.025 \times 15.425$	=	293.4606
$11.400 \times 0.075$	=	0.8550
$(4.000 + 1.800) \times 2.200 \times 1/2$	=	6.38000
$(1.800 + 4.000) \times 2.200 \times 1/2$	=	6.38000
$\pi \times 2.200^2 \times 90^\circ 00' / 360^\circ$		
$- 2.200^2 \times \sin 90^\circ 00' \times 1/2$	=	1.38133
$\pi \times 2.200^2 \times 90^\circ 00' / 360^\circ$		
$- 2.200^2 \times \sin 90^\circ 00' \times 1/2$	=	1.38133

計 4816.32972

床面積 4816.32 m<sup>2</sup>



27番1

名取市愛島塩手字野田山 27番地1・33番地・27番地1先

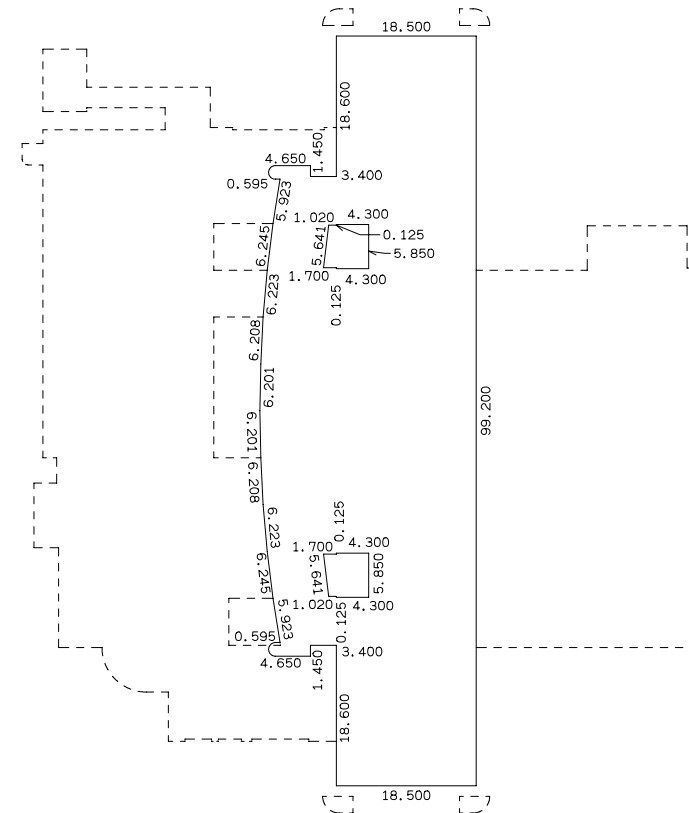
主たる建物3階～5階(各階同型)

求積表

18.500 × 99.200	= 1835.2000
0.595 × 1.800	= 1.0710
4.055 × 64.900	= 263.1695
3.400 × 62.000	= 210.8000
$\pi \times 0.900^2 \times 180^\circ 00' / 360^\circ$	
$- 0.900^2 \times \sin 180^\circ 00' \times 1/2$	= 1.27235
$( 49.600 + 61.300 ) \times 0.925 \times 1/2$	= 51.29125
$( 37.200 + 49.600 ) \times 0.750 \times 1/2$	= 32.55000
$( 24.800 + 37.200 ) \times 0.540 \times 1/2$	= 16.74000
$( 12.400 + 24.800 ) \times 0.320 \times 1/2$	= 5.95200
$12.400 \times 0.110 \times 1/2$	= 0.68200
0.595 × 1.800	= 1.0710
$\pi \times 0.900^2 \times 180^\circ 00' / 360^\circ$	
$- 0.900^2 \times \sin 180^\circ 00' \times 1/2$	= 1.27235
4.300 × 5.850	= -25.1550
$( 1.700 + 1.020 ) \times 5.600 \times 1/2$	= -7.61600
4.300 × 5.850	= -25.1550
$( 1.020 + 1.700 ) \times 5.600 \times 1/2$	= -7.61600

計 2355.52945

床面積 2355.52 m<sup>2</sup>



27番1

名取市愛島塩手字野田山 27番地1・33番地・27番地1先

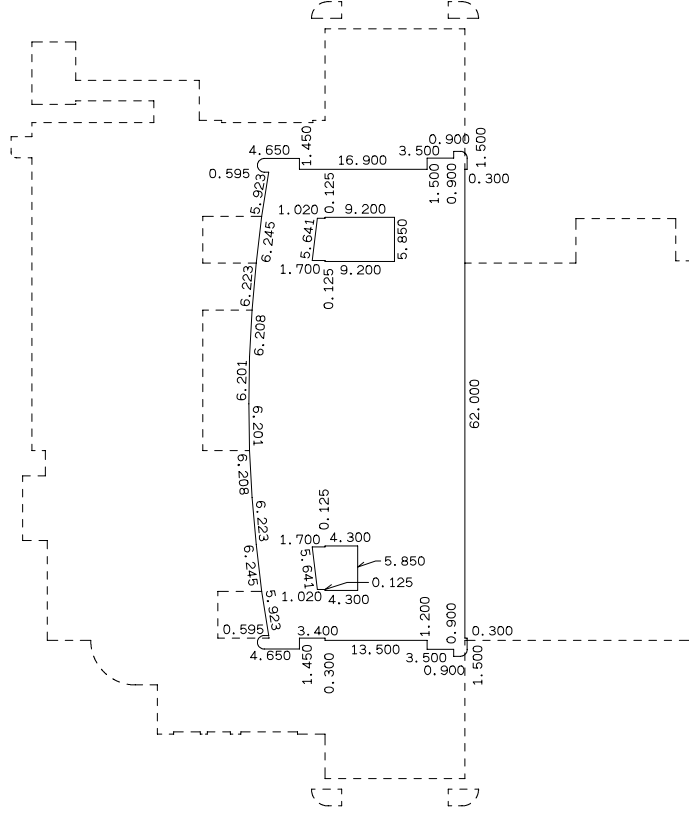
求積表

$(0.900 + 1.800) \times 0.900 \times 1/2$	=	1.21500
$\pi \times 0.900^2 \times 90^\circ 00' / 360^\circ$	=	0.23117
$- 0.900^2 \times \sin 90^\circ 00' \times 1/2$	=	0.40500
$5.300 \times 1.500$	=	7.9500
$4.055 \times 64.900$	=	263.1695
$0.595 \times 1.800$	=	1.0710
$21.900 \times 62.000$	=	1357.8000
$\pi \times 0.900^2 \times 180^\circ 00' / 360^\circ$	=	0.46235
$- 0.900^2 \times \sin 180^\circ 00' \times 1/2$	=	0.00000
$(49.600 + 61.300) \times 0.925 \times 1/2$	=	51.29125
$(37.200 + 49.600) \times 0.750 \times 1/2$	=	32.55000
$(24.800 + 37.200) \times 0.540 \times 1/2$	=	16.74000
$(12.400 + 24.800) \times 0.320 \times 1/2$	=	5.95200
$12.400 \times 0.110 \times 1/2$	=	0.68200
$0.595 \times 1.800$	=	1.0710
$18.800 \times 0.300$	=	5.6400
$5.300 \times 1.200$	=	6.3600
$\pi \times 0.900^2 \times 180^\circ 00' / 360^\circ$	=	0.46235
$- 0.900^2 \times \sin 180^\circ 00' \times 1/2$	=	0.00000
$(0.900 + 1.800) \times 0.900 \times 1/2$	=	1.21500
$\pi \times 0.900^2 \times 90^\circ 00' / 360^\circ$	=	0.23117
$- 0.900^2 \times \sin 90^\circ 00' \times 1/2$	=	0.40500
$9.200 \times 5.850$	=	53.8200
$(1.700 + 1.020) \times 5.600 \times 1/2$	=	7.61600
$4.300 \times 5.850$	=	25.1550
$(1.020 + 1.700) \times 5.600 \times 1/2$	=	7.61600

計 1661.50679

床面積 1661.50 m<sup>2</sup>

主たる建物6階



27番1

名取市愛島塩手字野田山 27番地1・33番地・27番地1先

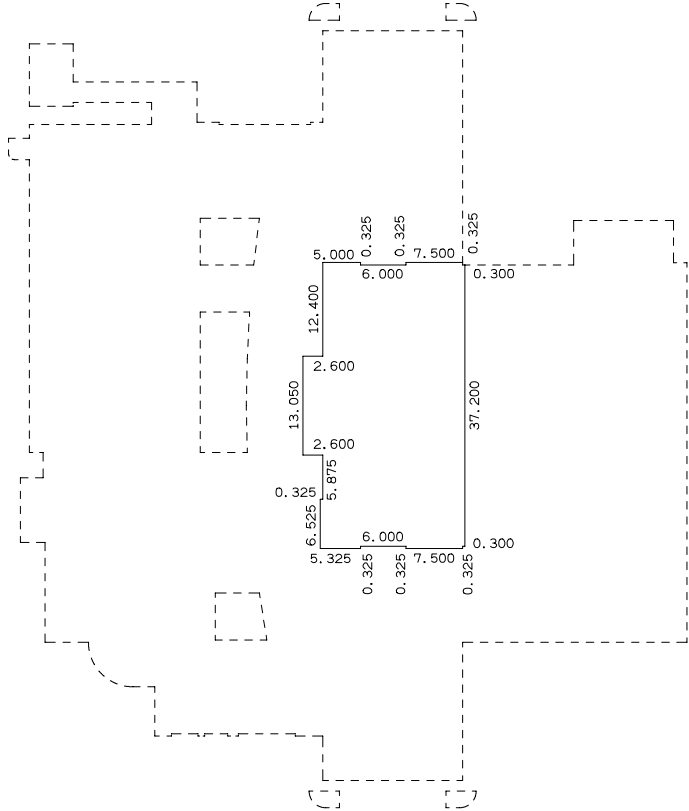
主たる建物7階

求積表

5.000 × 37.850	=	189.2500
7.500 × 0.325	=	2.4375
13.800 × 37.200	=	513.3600
2.600 × 13.050	=	33.9300
0.325 × 6.525	=	2.1206
7.500 × 0.325	=	2.4375

計 743.5356

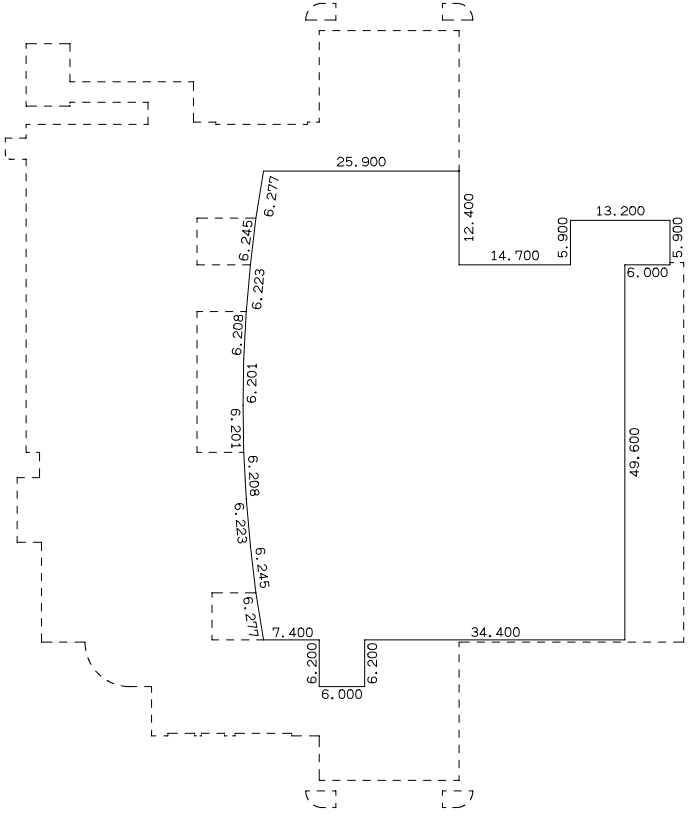
床面積 743.53 ㎡



27番1

名取市愛島塩手字野田山 27番地1・33番地・27番地1先

主たる建物地下1階



求積表

$( 49.600 + 62.000 ) \times 0.980 \times 1/2$	=	54.68400
$25.900 \times 12.400$	=	321.1600
$( 37.200 + 49.600 ) \times 0.750 \times 1/2$	=	32.55000
$13.200 \times 5.900$	=	77.8800
$47.800 \times 49.600$	=	2370.8800
$( 24.800 + 37.200 ) \times 0.540 \times 1/2$	=	16.74000
$( 12.400 + 24.800 ) \times 0.320 \times 1/2$	=	5.95200
$12.400 \times 0.110 \times 1/2$	=	0.68200
$6.000 \times 6.200$	=	37.2000

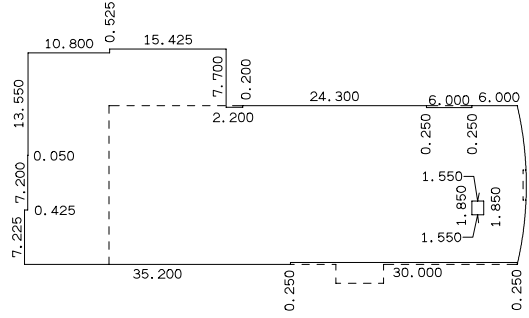
計 2917.72800

床面積 2917.72 ㎡

27番1

名取市愛島塩手字野田山 27番地1・33番地・27番地1先

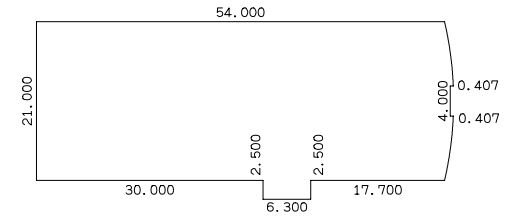
附属建物(符号1) 2階



求積表

0.425 × 7.225	=	3.0706
0.050 × 14.425	=	0.7213
26.225 × 27.975	=	733.6444
15.425 × 0.525	=	8.0981
38.500 × 20.500	=	789.2500
8.500 × 0.250	=	2.1250
2.200 × 0.050	=	0.1100
24.300 × 0.250	=	6.0750
6.000 × 0.250	=	1.5000
$\pi \times 46.538^2 \times 26^\circ 05' / 360^\circ$		
$-46.538^2 \times \sin 26^\circ 05' \times 1/2$	=	16.85211
1.550 × 1.850	=	-2.8675
<hr/>		
計		1558.57901
<hr/>		
床面積		1558.57 m <sup>2</sup>

附属建物(符号1) 1階



求積表

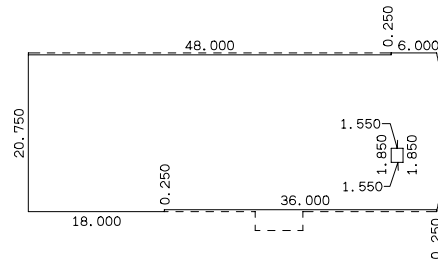
54.000 × 21.000	=	1134.0000
6.300 × 2.500	=	15.7500
$\pi \times 46.538^2 \times 26^\circ 05' / 360^\circ$		
$-46.538^2 \times \sin 26^\circ 05' \times 1/2$	=	16.85211
0.407 × 4.000	=	-1.6280
$\pi \times 46.533^2 \times 4^\circ 56' / 360^\circ$		
$-46.533^2 \times \sin 4^\circ 56' \times 1/2$	=	-0.11514
<hr/>		
計		1164.85897
<hr/>		
床面積		1164.85 m <sup>2</sup>



27番1

名取市愛島塩手字野田山 27番地1・33番地・27番地1先

附属建物(符号1)4階



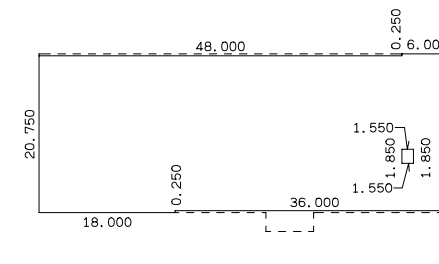
求積表

$54.000 \times 20.500$	=	1107.0000
$18.000 \times 0.250$	=	4.5000
$6.000 \times 0.250$	=	1.5000
$\pi \times 46.538^2 \times 26^\circ 05' / 360^\circ$	=	16.85211
$-46.538^2 \times \sin 26^\circ 05' \times 1/2$	=	-2.8675
$1.550 \times 1.850$	=	

計 1126.98461

床面積 1126.98 m<sup>2</sup>

附属建物(符号1)3階



求積表

$54.000 \times 20.500$	=	1107.0000
$18.000 \times 0.250$	=	4.5000
$6.000 \times 0.250$	=	1.5000
$\pi \times 46.538^2 \times 26^\circ 05' / 360^\circ$	=	16.85211
$-46.538^2 \times \sin 26^\circ 05' \times 1/2$	=	-2.8675
$1.550 \times 1.850$	=	

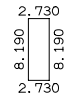
計 1126.98461

床面積 1126.98 m<sup>2</sup>

27番1

名取市愛島塩手字野田山 27番地1・33番地・27番地1先

附属建物(符号4)

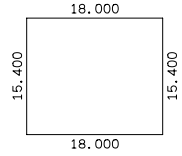


求積表

2.730 × 8.190 = 22.3587

床面積 22.35 m<sup>2</sup>

附属建物(符号2)

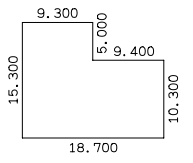


求積表

18.000 × 15.400 = 277.2000

床面積 277.20 m<sup>2</sup>

附属建物(符号5)

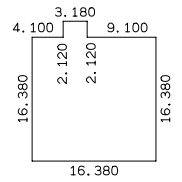


求積表

9.300 × 5.000 = 46.5000  
18.700 × 10.300 = 192.6100  
計 239.1100

床面積 239.11 m<sup>2</sup>

附属建物(符号3)



求積表

3.180 × 2.120 = 6.7416  
16.380 × 16.380 = 268.3044  
計 275.0460

床面積 275.04 m<sup>2</sup>

宮城県病院事業管理者 木村時久

27番1

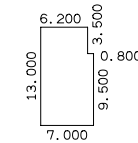
名取市愛島塩手字野田山 27番地1・33番地・27番地1先

求積表

0.750 × 1.300	=	0.9750
0.750 × 1.300	=	0.9750
0.750 × 1.300	=	0.9750
0.750 × 1.300	=	0.9750
1.100 × 15.600	=	17.1600
0.750 × 1.300	=	0.9750
0.750 × 1.300	=	0.9750
0.750 × 1.300	=	0.9750
0.750 × 1.300	=	0.9750
0.750 × 1.300	=	0.9750
0.750 × 1.300	=	0.9750
3.900 × 16.500	=	64.3500
12.000 × 2.100	=	25.2000
2.000 × 23.400	=	46.8000
10.400 × 3.000	=	31.2000
4.000 × 2.000	=	8.0000
8.400 × 2.200	=	18.4800
11.700 × 0.500	=	5.8500
1.800 × 25.600	=	46.0800
8.800 × 2.000	=	17.6000
4.900 × 1.000	=	4.9000
47.600 × 44.600	=	2122.9600
3.200 × 2.600	=	8.3200
1.500 × 0.900	=	1.3500
26.200 × 3.500	=	91.7000
5.000 × 1.800	=	9.0000
5.300 × 42.900	=	227.3700
1.200 × 27.000	=	32.4000
0.750 × 16.900	=	12.6750
1.250 × 10.900	=	13.6250
1.000 × 8.400	=	8.4000
0.800 × 2.900	=	2.3200
0.800 × 3.500	=	2.8000
0.400 × 3.200	=	-1.2800
0.400 × 7.400	=	-2.9600
0.800 × 13.300	=	-10.6400
0.400 × 17.400	=	-6.9600
0.400 × 1.400	=	-0.5600
0.400 × 9.000	=	-3.6000
10.100 × 32.470	=	-327.9470
2.020 × 0.730	=	-1.4746
6.000 × 5.770	=	-34.6200
5.270 × 1.960	=	-10.3292
4.500 × 24.170	=	-108.7650
17.270 × 2.160	=	-37.3032
18.000 × 1.070	=	-19.2600
12.800 × 2.500	=	-32.0000
10.800 × 2.300	=	-24.8400
23.750 × 26.170	=	-621.5375
2.500 × 1.000	=	-2.5000
2.700 × 2.500	=	-6.7500
8.820 × 0.730	=	-6.4386
0.150 × 1.000	=	-0.1500
0.050 × 18.100	=	-0.9050
0.750 × 5.220	=	-3.9150
4.500 × 2.500	=	-11.2500
<hr/>		
計	1552.3049	

床面積 1552.30 m<sup>2</sup>

附属建物(符号6)1階



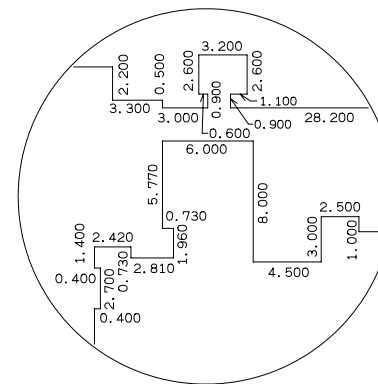
求積表

× 3.500	=	21.7000
× 9.500	=	66.5000

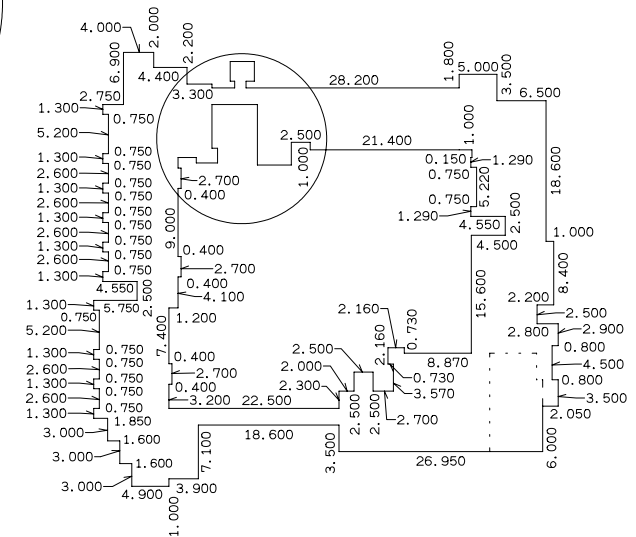
6.200	計	88.2000
7.000		

床面積 88.20 m<sup>2</sup>

拡大図1/500



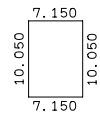
附属建物(符号6)2階



27番1

名取市愛島塩手字野田山 27番地1・33番地・27番地1先

附属建物(符号9) 1階



求積表

$$\begin{array}{r} 7.150 \times 10.050 = 71.8575 \end{array}$$

床面積 71.85 m<sup>2</sup>

附属建物(符号7)

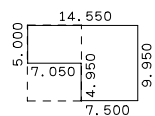


求積表

$$\begin{array}{r} 4.500 \times 6.700 = 30.1500 \end{array}$$

床面積 30.15 m<sup>2</sup>

附属建物(符号9) 地下1階

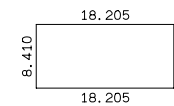


求積表

$$\begin{array}{r} 7.500 \times 9.950 = 74.6250 \\ 7.050 \times 5.000 = 35.2500 \\ \hline \text{計} 109.8750 \end{array}$$

床面積 109.87 m<sup>2</sup>

附属建物(符号8)



求積表

$$\begin{array}{r} 18.205 \times 8.410 = 153.1041 \end{array}$$

床面積 153.10 m<sup>2</sup>

27番1

名取市愛島塩手字野田山 27番地1・33番地・27番地1先

附属建物(符号12)



求積表

$$\frac{4.000 \times 6.200}{=} = 24.8000$$

床面積 24.80 m<sup>2</sup>

附属建物(符号10)

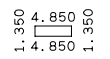


求積表

$$\frac{3.000 \times 5.000}{=} = 15.0000$$

床面積 15.00 m<sup>2</sup>

附属建物(符号13)

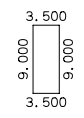


求積表

$$\frac{4.850 \times 1.350}{=} = 6.5475$$

床面積 6.54 m<sup>2</sup>

附属建物(符号11)



求積表

$$\frac{3.500 \times 9.000}{=} = 31.5000$$

床面積 31.50 m<sup>2</sup>

宮城県病院事業管理者 木村時久

1000